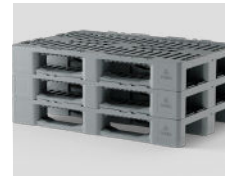


H1

OD-3CR



1200 x 800 mm



Technical Data	Bottom support	Top Deck	Dimensions (mm)	Maximum Load Capacities (kg)			Weight (kg)
				Static	Dynamic	Racking	PE
H1 (OD-3CR)	3 closed runners	open	1200 x 800 x 162	3400	1700	1000	18,0

Entry: 4 ways | Nesting height: - mm | Safety rim: 7,5 mm

Logistic Data	Standard Truck Europe		Standard Truck USA		Mega Truck		Jumbo Truck		40' HC Container	
	stack	total	stack	total	stack	total	stack	total	stack	total
H1 (OD-3CR)	16	528	-	-	18	594	18	684	21	462

Benefits

- H1 is the standard hygienic pallet with open top deck
- Made from food-grade PE is ideal for applications that require maximum hygiene
- Fully closed runners
- Ideal for use in automated conveyor systems
- Excellent resistance to temperature (from -40°C up to 70°C)
- Compatible with E1 to E4 euro plastic containers (400*600)
- Smooth surfaces, ensuring the safety of the workforce and the protection of goods
- Reusable pallet and 100% recyclable

Options

- Safety rims
- Open Central box retainers
- Ribs for nestable fish crates
- RFID transponders and other IoT options
- Specific colors on request
- Individual marking and labeling
- Also available made from recycled material