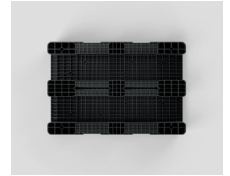
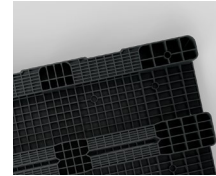
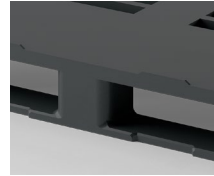


Endur E7.1

OD-3R


1200 x 800 mm



Technical Data	Bottom support	Top Deck	Dimensions (mm)	Maximum Load Capacities (kg)			Weight (kg)
				Static	Dynamic	Racking	PE
Endur E7.1 (OD-3R)	3 runners	open	1200 x 800 x 150	6000	1600	1000	20,0

Entry: 4 ways | Nesting height: - mm | Safety rim: 8 mm

Logistic Data	Standard Truck Europe		Standard Truck USA		Mega Truck		Jumbo Truck		40' HC Container	
	stack	total	stack	total	stack	total	stack	total	stack	total
Endur E7.1 (OD-3R)	16	528	-	-	18	594	18	684	16	400

Benefits

1. Designed for excellent performance with high circulation rates
2. Robustness and resistance to chemicals
3. Sustainable production: 100% recycled plastic, completely recyclable at the end of its life
4. Reusable pallet made of recycled plastic and 100% recyclable

Options

1. Safety rims
2. Grommets on deck, under deck, and under skids
3. Specific colors on request
4. Individual marking and labeling