

# CabCube Euro 1208

## 3 Runners Z folding



1200 × 800 × 1260 mm



Technical Data	Bottom support	External Dimensions (mm)	Internal Dimensions (mm)	Maximum Load Capacities (kg)			Weight (kg)
				Static	Dynamic	Racking	PP
CabCube Euro 1208	3 runners	1200 × 800 × 1260	1156 × 756 × 1074	900	500	500	45

### Benefits

- 100 % EURO Dimensions – Fits existing systems; reduces errors and logistics costs
- Steel Reinforced Base, Closed Runners + RFID ready – Automation-compatible design; improves tracking and operations
- Lightweight Lid (5.6kg) – Ergonomic; lowers fatigue and injury risk
- Auto-Locking Retainers – Fast and tool-free setup
- Tamper Evident Locking – Ensures cargo, lowers theft
- Robust PP Sleeve – High load protection; prevents damage and loss
- Recycled PE Base – Durable; 200+ cycles, lowers total cost
- Anti-Slip Surface – Splinter-free; meets safety standards
- 80% Volume Reduction – 1/5,3 return ratio; cuts empty transport costs
- 100% Recyclable – ESG-friendly; reduces waste disposal costs

### Options

- Conductive / ESD
- Track & tracing (RFID, Barcode, Beacons...)
- Customizable sleeve dimensions
- Customizable sleeve design and loading door
- Grommets under the base
- Return Collar, closure profiles
- Individual marking

# CabCube Euro 1208

## 3 Runners Z folding





1200 × 800 × 1260 mm



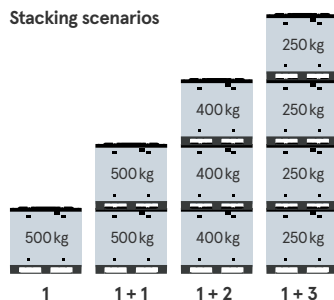
Special retainers

closed runners

Standard Components	Base	Sleeve (optional)	Lid
			
Weight	26 kg	13 kg	5,6 kg
Material	PE	PP	PE
Dimensions	1200 × 800 × 197 mm	1176 × 776 × 1100 mm	1200 × 800 × 85 mm

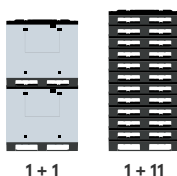
Technical Data	CabCube Euro 1208
Filling Volume	939 L
Height of folded box	262 mm
Nesting Space	22 mm
Total Weight	45 kg
Entries	4 way

### Stacking scenarios

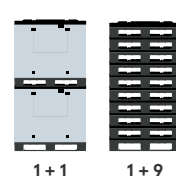


Maximum Load Capacities	
Filling weight	500 kg
Stacking load	900 kg
Stacking factor	1+3
Dynamic load	500 kg
Racking load	500 kg

### in Mega Truck



### in Standard Truck


Return Ratio  
1: 5,3

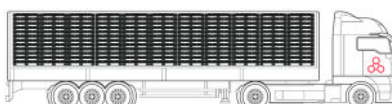

Truck Loads	Mega Truck (13,6 × 2,48 × 3,0 m)	Standard Truck (13,6 × 2,48 × 2,7 m)
unfolded per stack	2	2
unfolded total	66	66
folded per stack	12	10
folded total	396	330
Return ratio	1: 5,3	1: 5,3
Volume reduction	80%	80%

### Mega Truck utilization

66 full containers



396 empty containers



### Standard Truck utilization

66 full containers



330 empty containers

